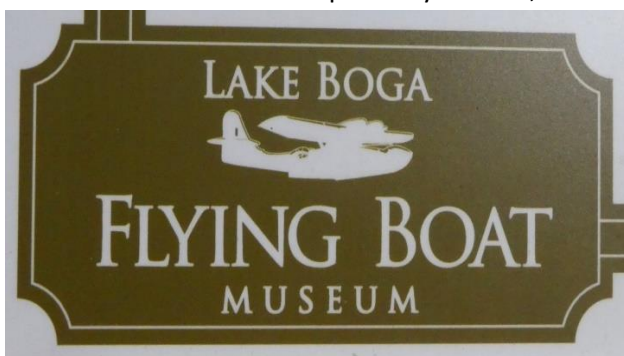


Flying boats – Paddle Steamers – Upper Murray – (Snow) country – final miles...

First stop after Mildura for one night:



A little further along our route lies **Lake Boga**. Attraction here is the **Flying Boat Museum**. Some German built **Dornier** flying boats were operated by the RAAF during WWII. After a fleet of them got destroyed in the bombing raid on Broome harbour it was decided to find a safe haven for these machines: **'Top secret'** at the time, *Lake Boga* was the perfect location: Way out of reach for enemy action, 3.5km in width and almost perfectly circular, enabling take off and landings in any wind condition.





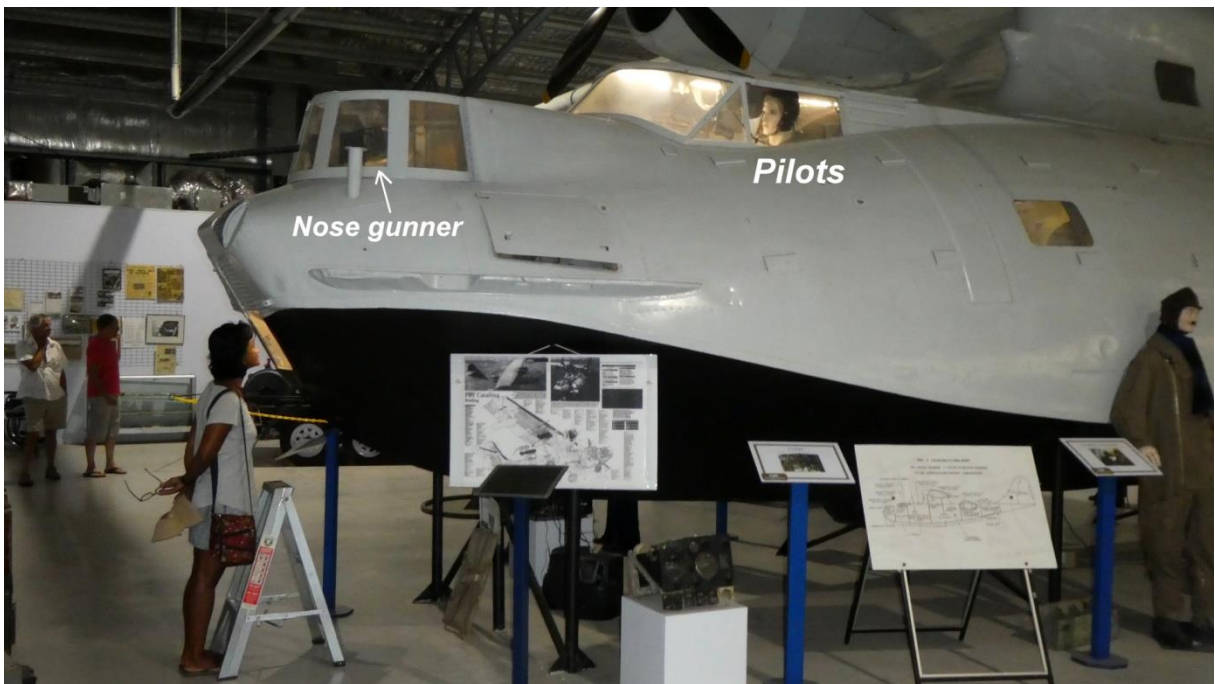
Qantas flying boat



Sunderland flying boat



RAAF Flying Boat





Two pilots behind the nose gunner's seat out front



Left wing stabilizing sponson

Folds up into the wing tip!

Here I also spot my favourite vehicle: Just the ticket for any promoter of **defensive driving!!!**



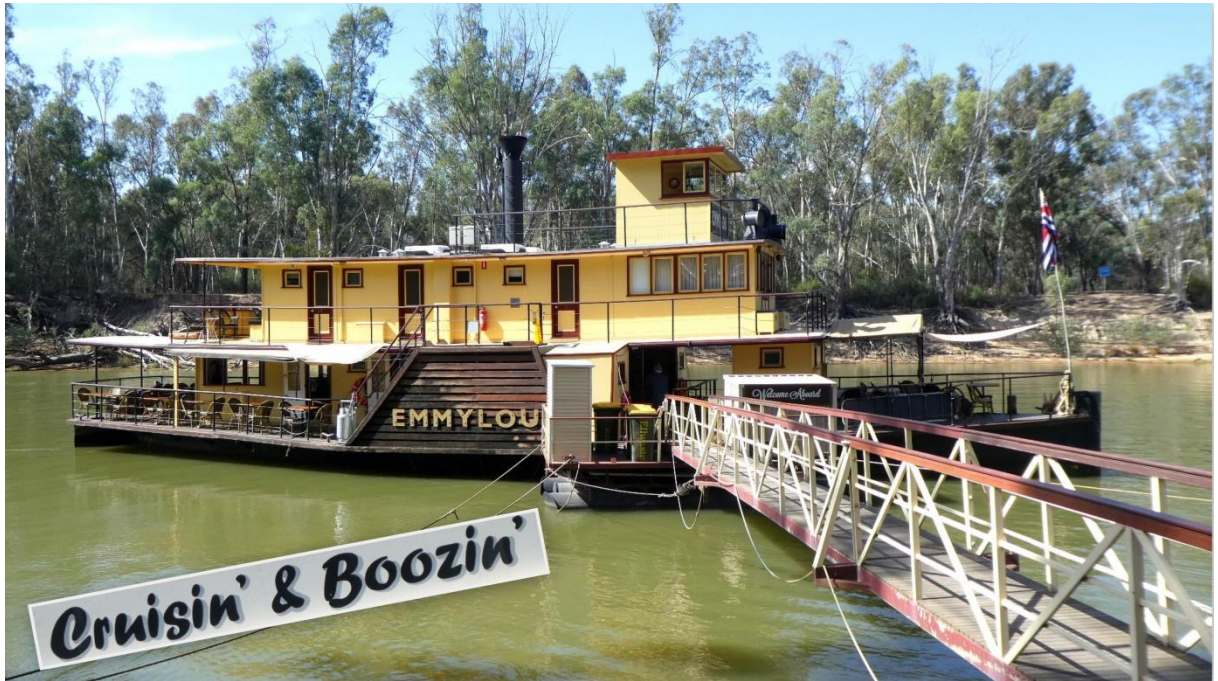
Note the pacifier:

Perfect gear to tackle SYDNEY traffic

We aim for **Echuca** - someone recommended a **steam-powered paddle wheeler** cruise there. Though the first thing we learn: Never camp under one of those river gums (type of eucalypt). Folklore calls them "widow makers" for very good reason...



The **Emmylou paddle wheeler** – powered by a 16hp *Marshall & Sons steam engine built 1906* in the UK. She consumes one tonne of wood a day and goes through 250ltr of water per hour to push her along. On-board the old girl we enjoy a pleasant two-hour lunch cruise up and down the Murray.



Best part of course is watching the steam engine at work – what an engineering marvel... 😊😊😊



THE ENGINE

Built by _____
Marshall & Sons,
England, in 1906.

Uses _____
1 tonne of wood p/day,
250 litres of water p/hr.

Weighs _____
7.5 tonnes dry.

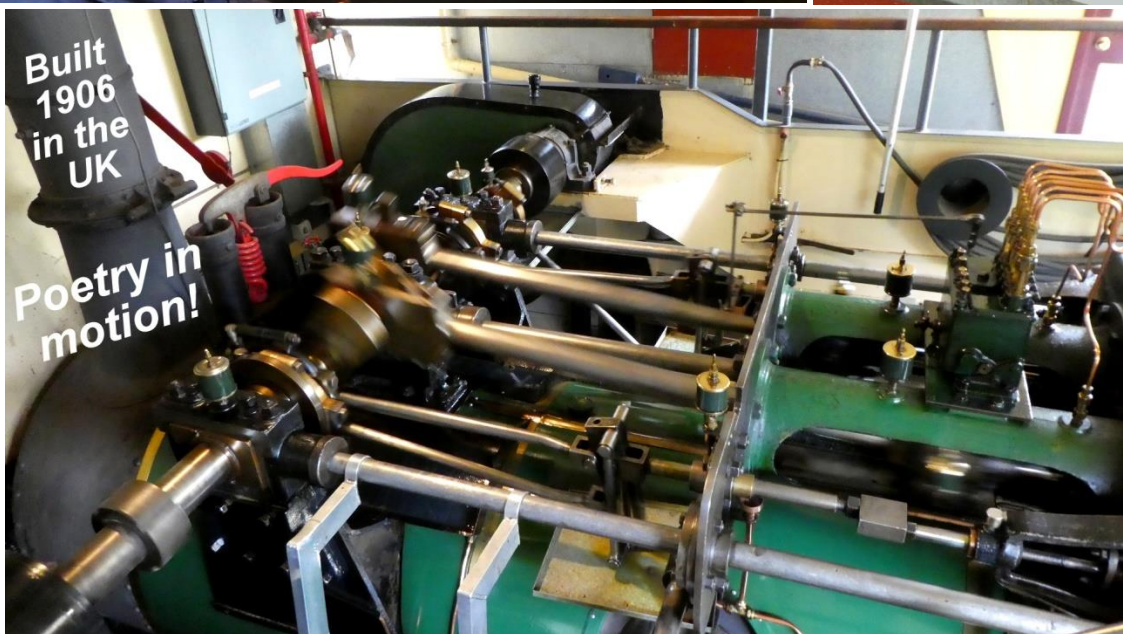
Horsepower _____
16 (Nominal)

Bore x Stroke _____
10" x 14"

Top speed _____
12 kph : with the
engine at 120rpm,
paddlewheels - 30rpm.



Stokin' up the boiler:
One tonne of wood p/day
250l water p/hour
producing HP 16



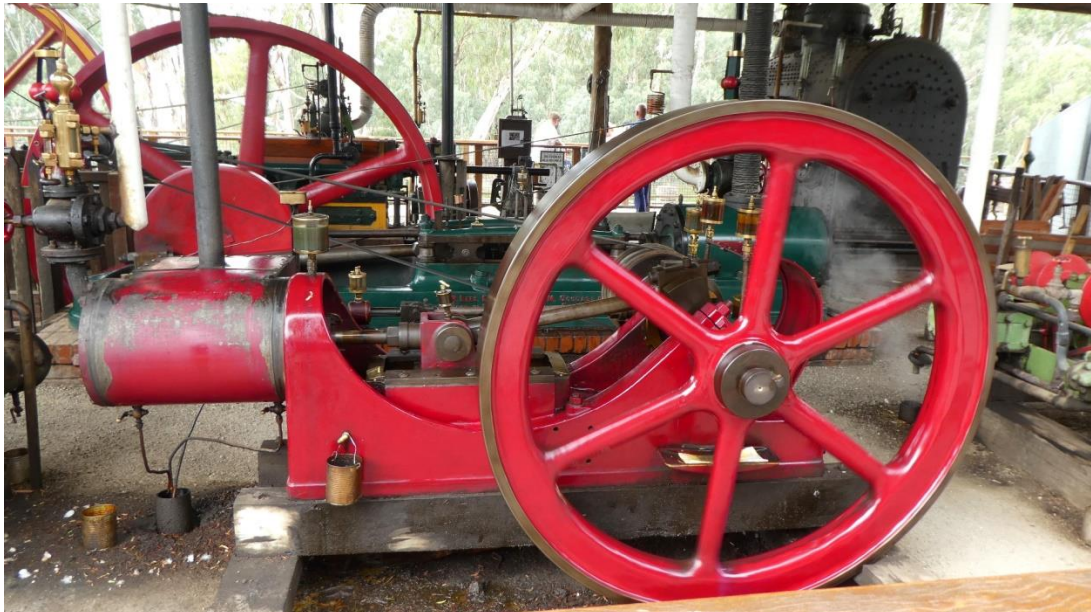
Built
1906
in the
UK

Poetry in
motion!

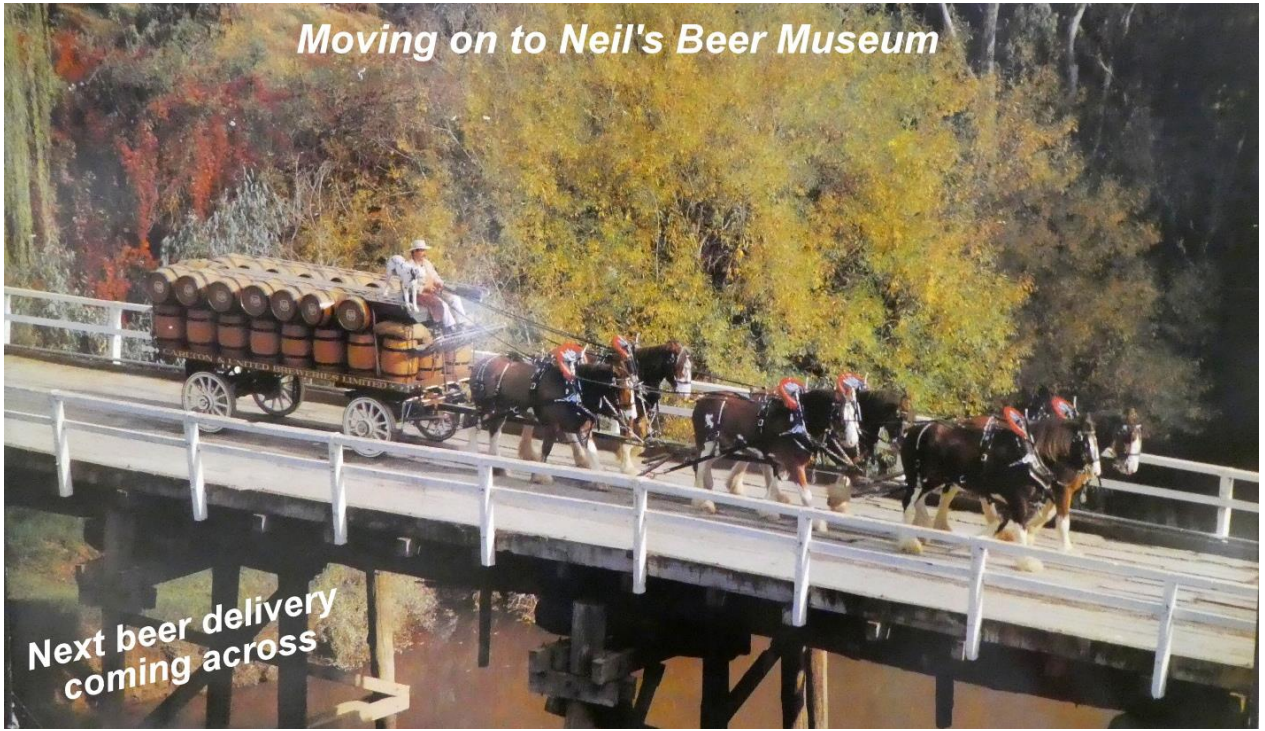


Call name "Totally exhausted"

History buffs will find a large **steam engine display** at Echuca – in full working order you might guess; huffing and puffing away, belt-driving all kinds of tools, massive tree saws, turning machines and the like!



Historic live steam engine display at Echuca



Moving on to Neil's Beer Museum

Next beer delivery coming across



*Neil's incredible collection of beer mugs
3500+ pieces from all over the world*



Neil - owner of beer museum



*Early model
Jayco*

Though it's not all about beer – Neil also has a collection of vehicles, some of them serious vintage!

Funny thing, there's a **confused flock of guinea fowl** patrolling Echuca's main strip – utterly oblivious about passing cars, left and right – we watch them for some time but cannot figure out what their plan is...

It seems, neither can they!!!



Echuca Guinea Fowl parade down main street



R we headin' left?



R we headin' right?



Paid a visit to the local **HOLDEN Museum**... in a funny twist, there sits a broken down FORD right outside its front door. The museum owner wastes no time to post pictures with condescending comments on the net. Within minutes he scores several dozen hits from outsiders tuning into the poor guy's malady.





Highlight en route home: Hooking up with precious friends Byron and Annie at Lake Hume



Tucking into Katherine's Thai chicken noodle salad



After enduring many months of total fire bans we are finally allowed to light up again!

Byron and Annie lead us astray - into new & naughty temptations concerning marshmallows:

Toast over hot coals as usual

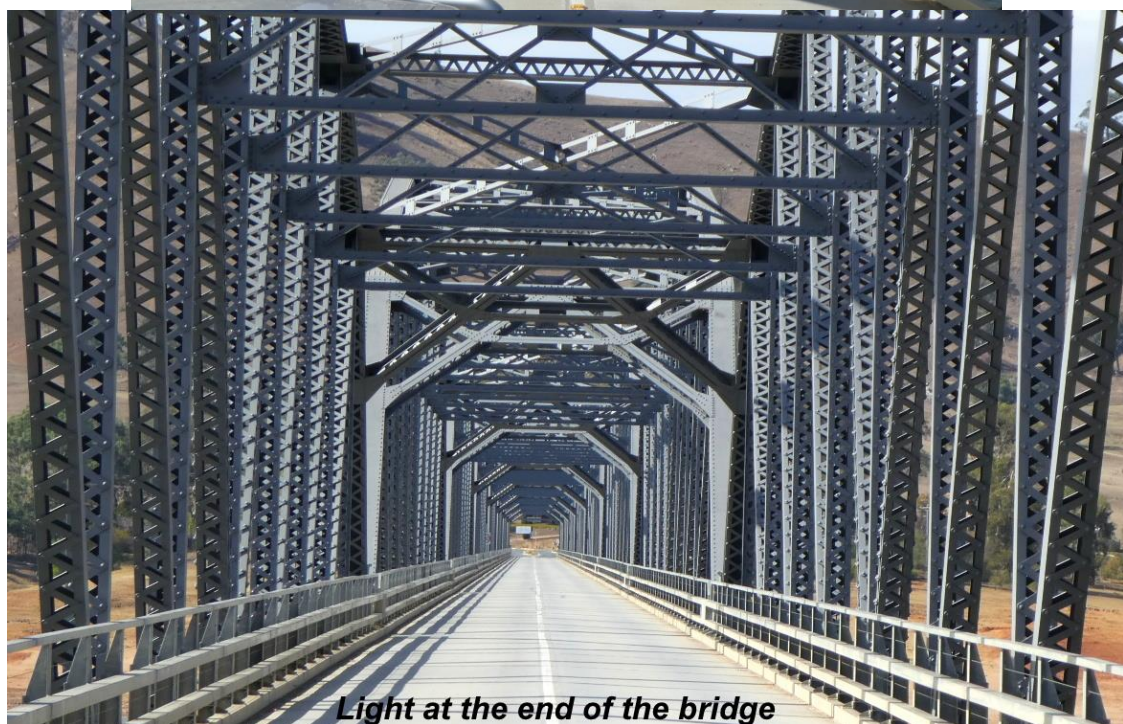
Dip toasted product into yoghurt

Dip/coat marshmallow in coconut flakes

Sensational!!!



Plan is to **follow the Murray River** right along into its upper reaches...





Victorian 'mountain buffalos'



Once upon a time...



Finding the best hideouts...

Matrix into the woods





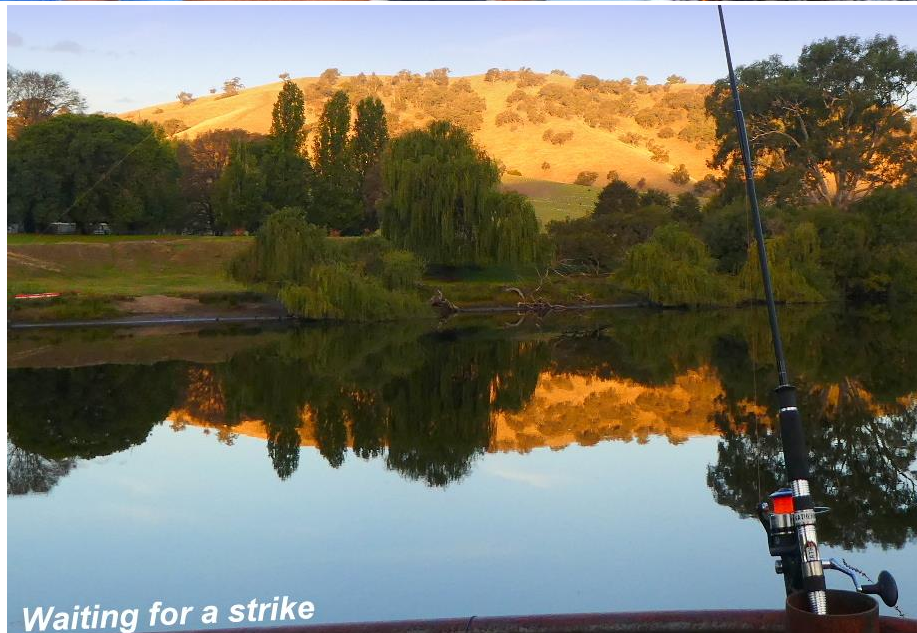
**Wombat
burrow**



Nearby: Grey Heron on the hunt



Fishing...



Waiting for a strike



The height challenged chef!

Another gourmet dinner by the Matrix 'onboard' chef:



Katherine's magnificent potato & fish bake

At last we must bid 'good-bye' to the great Murray River and head into the 'Snowy Country', crossing the Great Dividing Range from **Khancoban** to the alpine village and ski resort of **Thredbo**.



Finally leaving the Murray River behind...



Good bye MURRAY RIVER

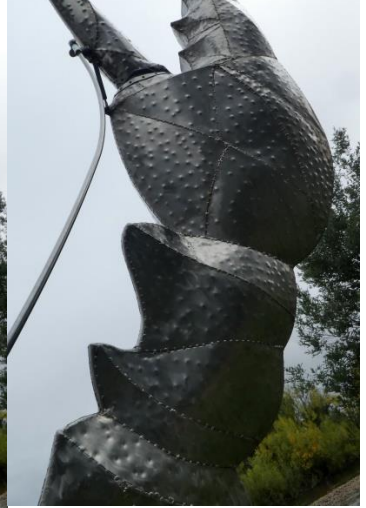


Way home...

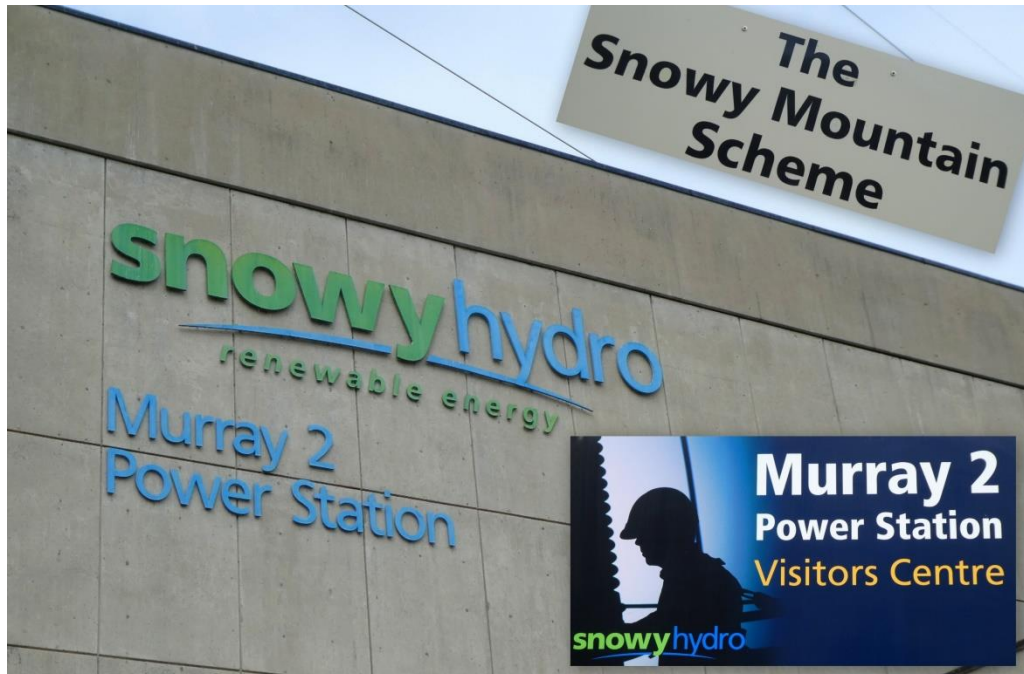
His claws open...



...and grab

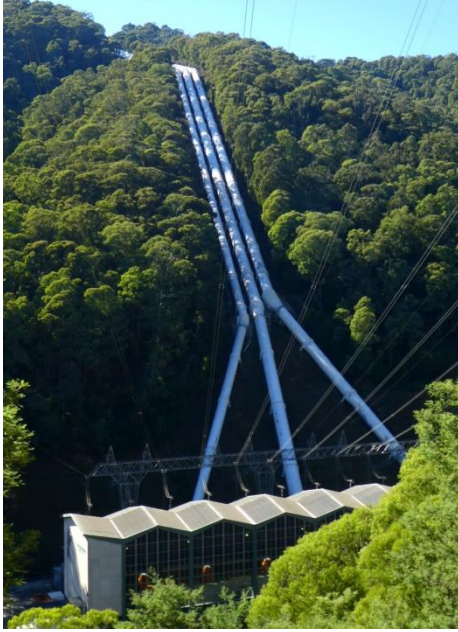


We pay a visit to one of the Snowy Hydro Power Stations – one of an extensive network of power plants:



Inside the power station:
The hydro turbines sit four stories below this level!

Snowy Mountains hydro-electric power station



The men and women who built the Snowy were a hardy breed bringing with them skills from the four corners of the world. Between 1949 and 1974, over 100,000 men and women from more than 30 countries, including Australia, worked on the Scheme. Many were escaping the horror of war-torn Europe to begin a new life in a new land.

During construction, families persevered through harsh conditions, rugged country and a unique climate. Access roads had to be built and small towns constructed miles from anywhere to house the multi-cultural workforce.

Murray 2 is the third largest power station in the scheme. It has four units – three 128 megawatts (MV) and one 150 MV. At full capacity Murray 2 can provide enough electricity to power 646,000 average sized homes and releases enough water to fill an Olympic-sized swimming pool every ten seconds.

Snowy Mountains Hydro-Electric Scheme



Power to Australia

Word is out, global warming has graced us with a **sudden cold snap** bringing with it the **first snow fall of 2019** – yes, it is **April 1** but that's no fool's joke!

Our ski season officially starts June 1. Nevertheless we look forward to get our hands on the white stuff!

Snowy Mountains - April 1 - first snow (no kidding!)



Crossing the Dividing Range warning:



Ambient temperatures have dropped markedly – only a week and a bit ago we had °C's in the mid-thirties. Shortly before crossing 'Dead Horse Gap' into Thredbo: Does the sign below explain it all ??



On route from Khancoban to Thredbo Alpine Village





Thredbo Diggins - alpine camping



Thredbo River



Thredbo Diggins camp



Fishing for trout



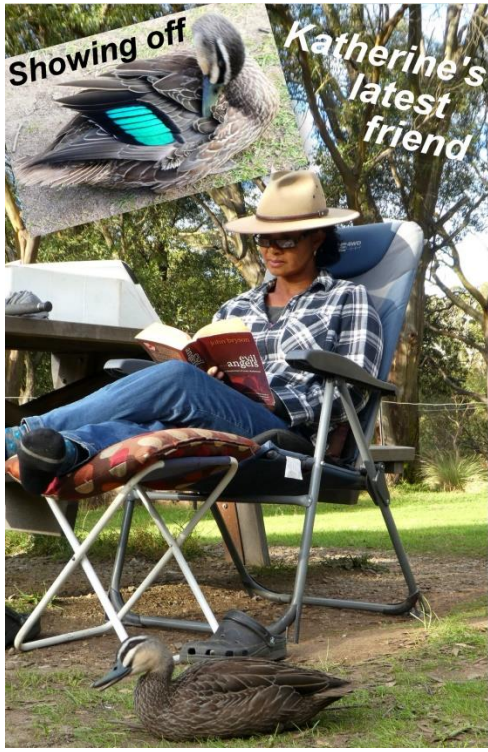
SKI YEAR-ROUND
 PERISHER + WHISTLER
 + HAKUBA VALLEY
 + BEST OF THE U.S.

epic
 AUSTRALIA PASS™

*Ski-Tube train to
 Perisher Valley
 ski resort*

VAIL | BEAVER CREEK | WHISTLER BLACKCOMB | BRECKENRIDGE
 PARK CITY | KEYSTONE | HEAVENLY | NORTHSTAR | KIRKWOOD
 STOWE | OKEMO | MOUNT SUNAPEE | CRESTED BUTTE
 STEVENS PASS | PERISHER | ARAPAHOE BASIN | HAKUBA VALLEY

Skiers' choices: Australia's ski resort **'Perisher/Blue Cow'** nowadays is owned by **Vail/USA**.
 A season pass will buy snow access to both sides of the **'Big Pond'** - enjoy winter fun all year long!



By the time we arrive at **Perisher Valley**, the white wonder world has all but melted away except for a few remnants in the shadows and a dusting of snow covering the Ranges around Mt Kosciuszko, Australia's highest peak at 2,228 metres above sea level.



Probably the closest our Matrix will ever come to snow 😊



Place of lowest recorded temperature in Australia -23C



Above map shows our anti-clockwise route of the continent: 11 months on the road -

26,849km (16,780 miles) travelled – 5,032 ltr of Diesel propellant used -

222 different locations camped (see all flagged above ↑).

Yet, as you see, there is much blank space still... that begs to be “matrixed” 😊

One needs at least several life times to experience all this amazing country offers the intrepid explorer!

Our last miles home from the Snowy Mountains are mere routine – cruising up the freeway for our final assault on **Sydney's "carmageddon"**.



"What a cool find!"

We've completed a full circle of OZ from the tropical north to the snow country in the south and east to west.

Finding fresh snow on this trip certainly came as a bonus surprise!

From crocodile swamps to trout streams and outback plains to Australia's highest mountains – we've been to countless breathtaking locations which truly inspire us to look for new adventures...

Tremendous it was but we have only just scratched the surface!

Hopefully you have enjoyed the journey with us.

"We know some of you are already making plans to follow our tracks...!"



**Greetings
from Chris
and
Katherine**



*not all who
wander
are lost*